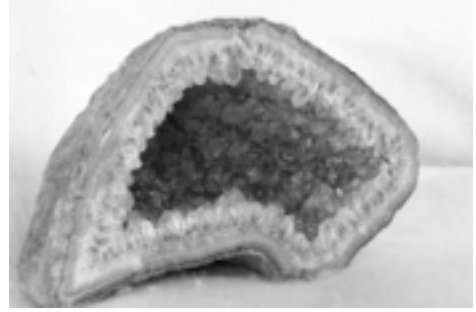
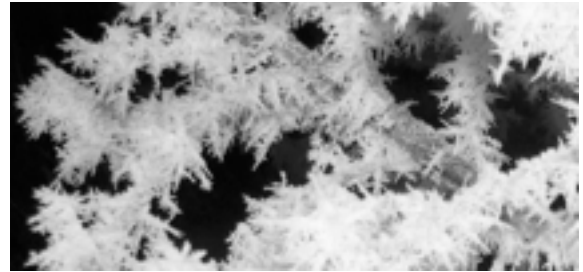


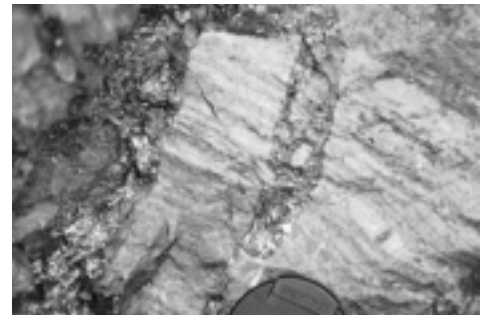
Geode: A geode is a rounded, hollow rock that is often lined with mineral crystals.



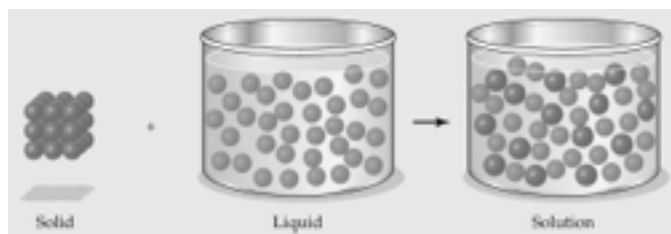
Crystallization: the process by which atoms are arranged to form a material with a crystal structure.



Vein: A vein is a narrow channel or slab of a mineral that is different from the surrounding rock.



Solution: A solution is a mixture in which one substance is dissolved in another.



Cleavage: A mineral that splits easily along flat surfaces has the property of cleavage.



Fracture: How a mineral looks when it breaks apart in an irregular way.

